

www.visionaryhomes.com


Madison

3 Elevations Available

 2,661 Total Sq.Ft.

 1,950 Finished Sq.Ft.

 3 - 5 Bedrooms

 2.5 - 3 Bathrooms

 2 - 3 Car Garage

The simplicity of The Madison 2-story floor plan combined with a modern appeal for an overall stylish and functional design. Our Madison floor features 3 beds and 2.5 baths with an open-concept main living area. Featuring a large entrance welcomes you into the home. The flow from the family room into the kitchen and dining space makes you feel right at home, with plenty of windows for natural light. A walk-in pantry in the kitchen provides lots of space for storing your kitchen essentials and food. Conveniently located off the garage is a mudroom and powder room. Step upstairs to discover a loft area near an open to below view of the front door, which creates an open and airy feel to the home you'll love. Feel ultimate relaxation when in your owner's suite with a walk-in closet and owner's bath. With two bedrooms, one with a walk-in closet, also upstairs. With the option as a slab-on-grade or including an unfinished basement.



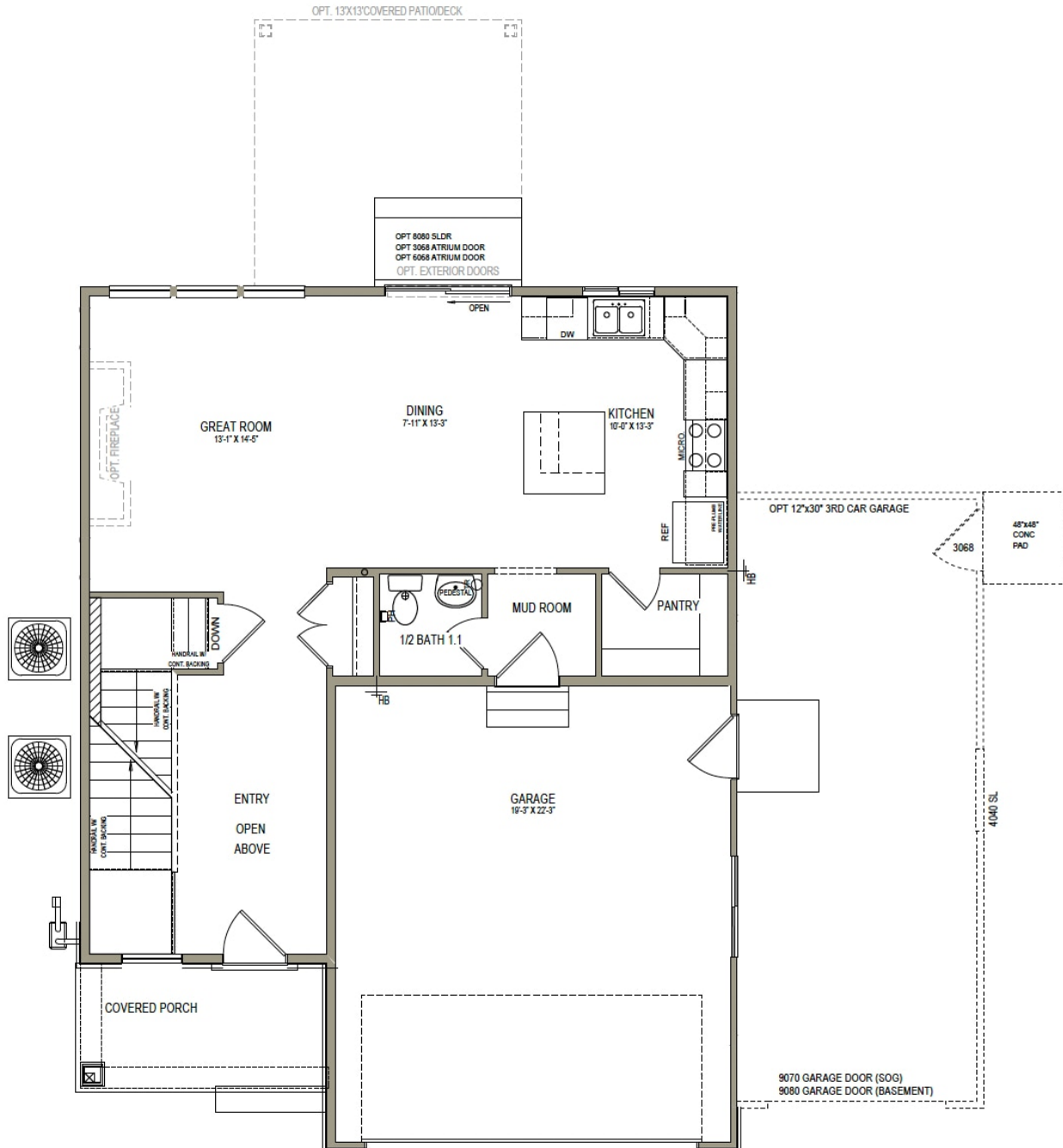
Craftsman



Farmhouse



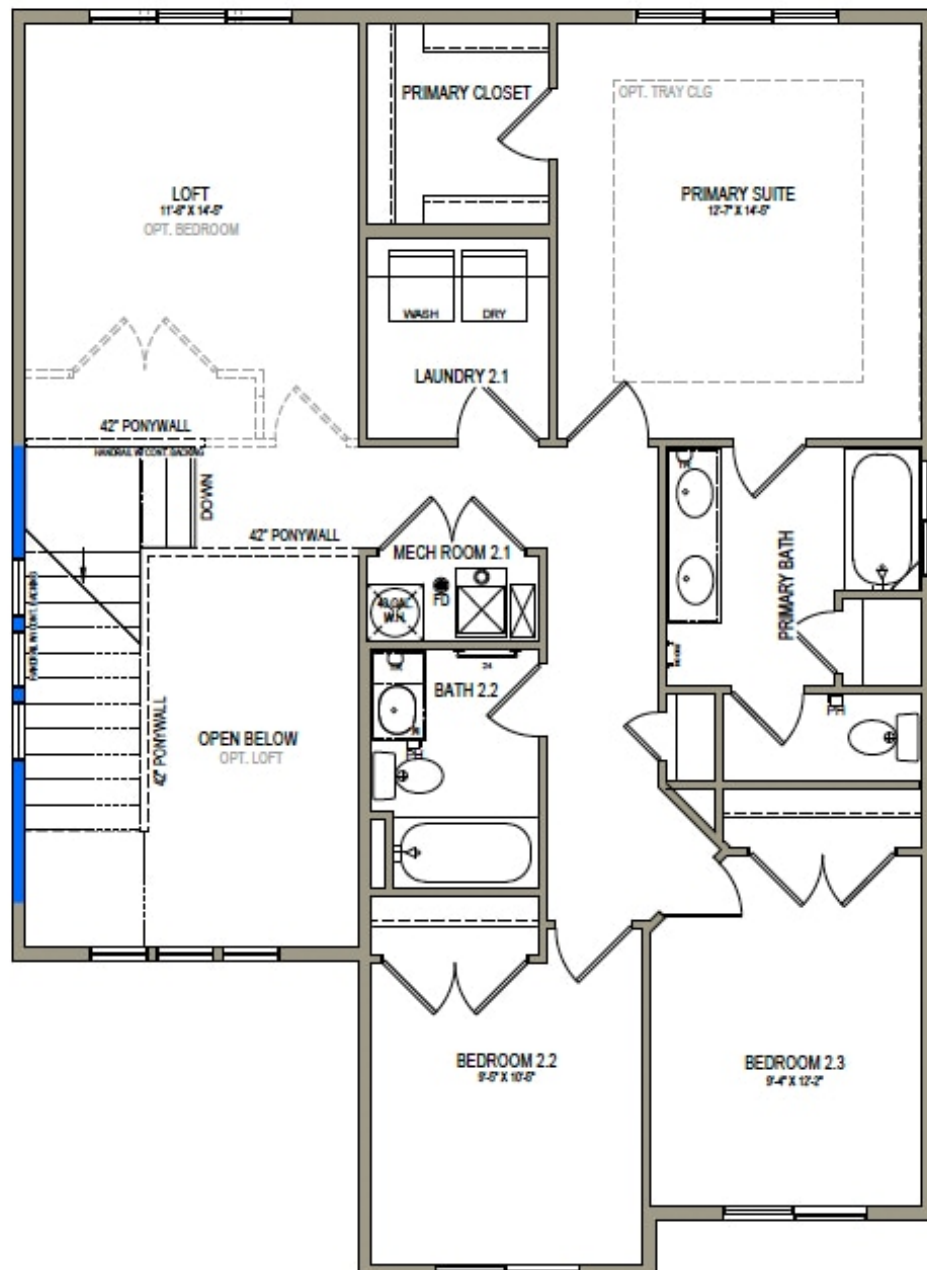
Traditional w/Stucco

www.visionaryhomes.com
MAIN LEVEL W/ UNFINISHED BASEMENT


*Visionary Homes reserves the right to change prices without notice.
Approximate square footage and options shown in plan may not be included in base price.

435.228.4702
visionaryhomes.com

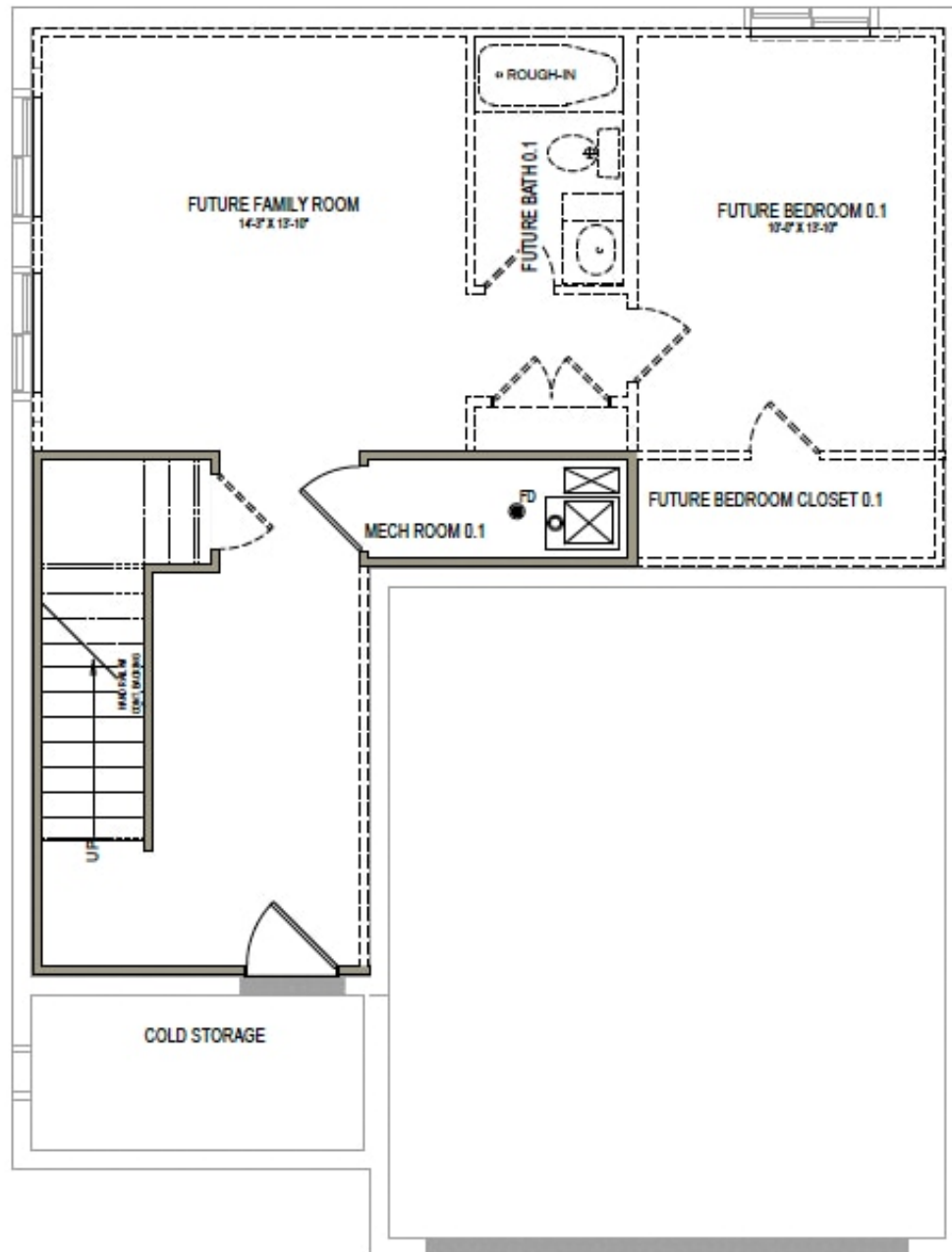
UPPER LEVEL



WINDOWS MAY NOT BE
AVAILABLE W/3RD CAR GAR.

www.visionaryhomes.com

UNFINISHED BASEMENT



*Visionary Homes reserves the right to change prices without notice.
Approximate square footage and options shown in plan may not be included in base price.

435.228.4702
visionaryhomes.com