

www.visionaryhomes.com


Springhill

3 Elevations Available

 3,055 Total Sq.Ft.

 2,216 Finished Sq.Ft.

 No Basement

 3 - 6 Bedrooms

 2.5 - 3 Bathrooms

 2 - 3 Car Garage

With a classic interior and exterior design, you and your family will love The Springhill 2-story floor plan. Featuring 3 beds and 2.5 baths, with an open-concept layout on the main level. Gather with family in the family room, kitchen, or dining area for movie nights, dinners spent together, and cooking. A spacious owner's suite upstairs with an owner's bath and large walk-in closet provide the perfect space to relax and unwind. The staircase open to below brings in additional light to the loft space upstairs, near the bedrooms, with a walk-in closet for storing anything from board games to extra towels and blankets. Turn the optional basement into additional living space with a recreation room, bedrooms, and bathroom. With additional options, this home can feature up to 6 bedrooms and 3.5 bathrooms.



Craftsman



Farmhouse



Traditional w/Stucco

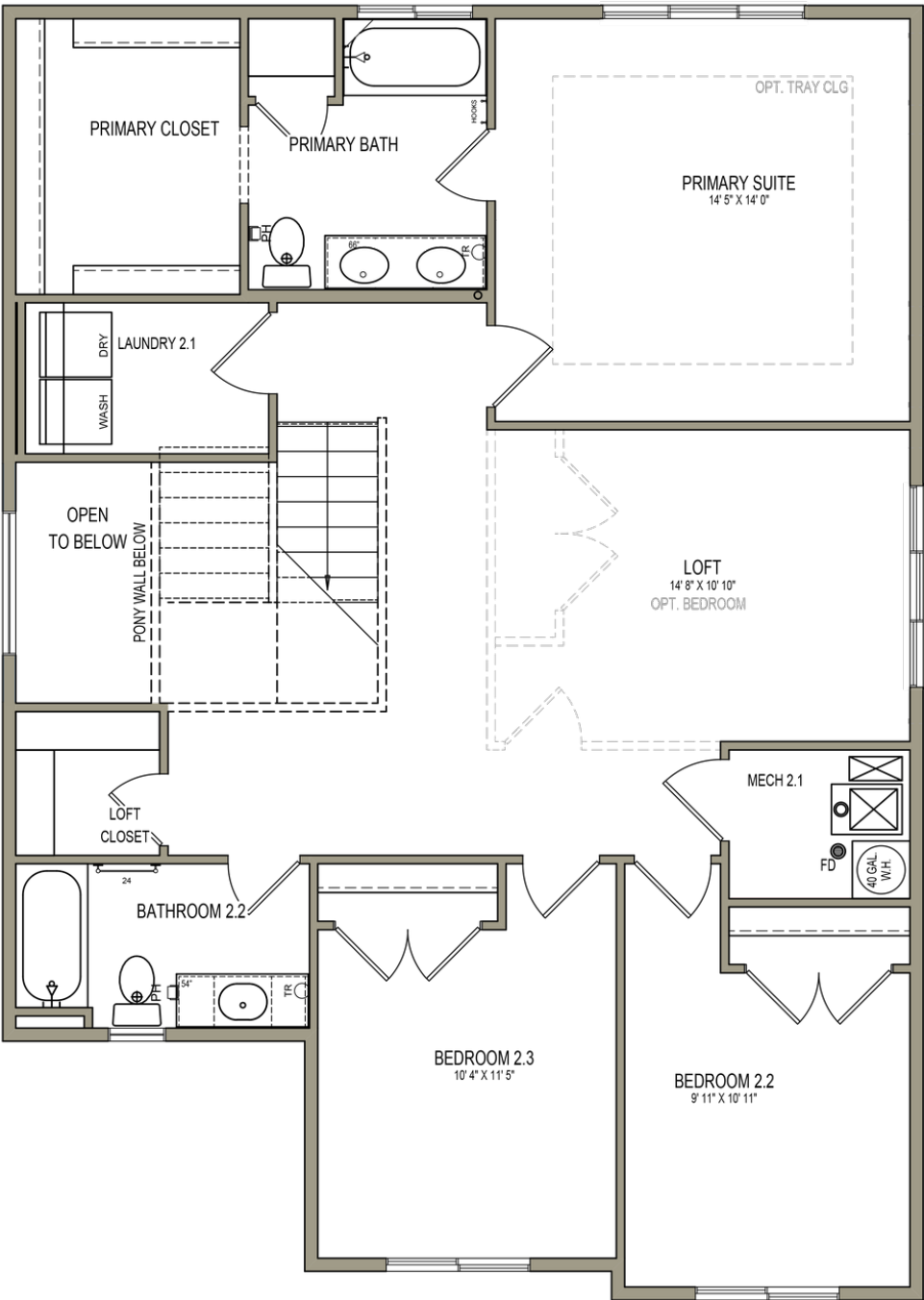
*Visionary Homes reserves the right to change prices without notice.
Approximate square footage and options shown in plan may not be included in base price.

435.228.4702
visionaryhomes.com



www.visionaryhomes.com

UPPER LEVEL

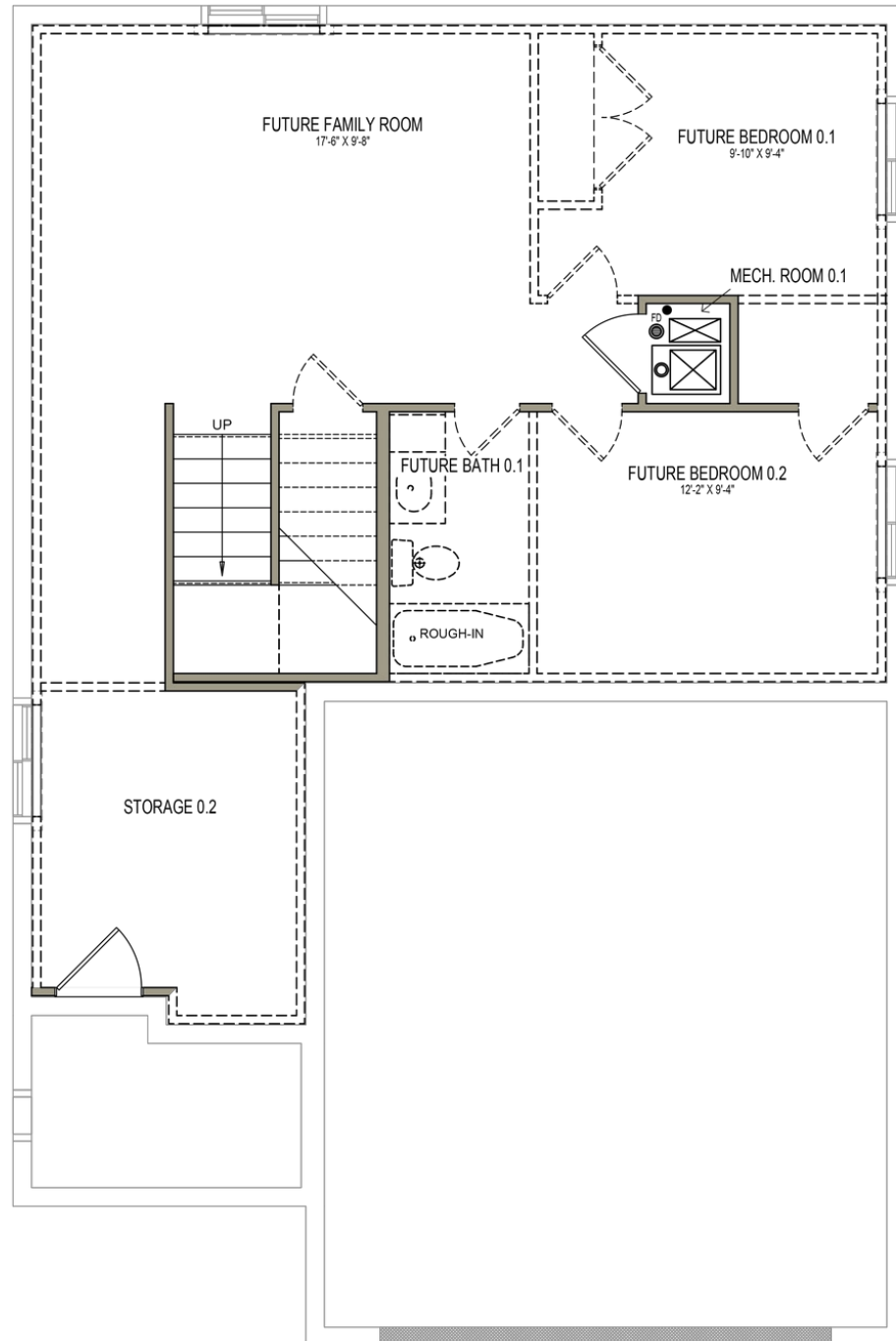


WINDOWS MAY NOT BE
AVAILABLE W/3RD CAR GAR.

*Visionary Homes reserves the right to change prices without notice.
Approximate square footage and options shown in plan may not be included in
base price.

www.visionaryhomes.com

UNFINISHED BASEMENT



*Visionary Homes reserves the right to change prices without notice.
Approximate square footage and options shown in plan may not be included in base price.

435.228.4702
visionaryhomes.com